

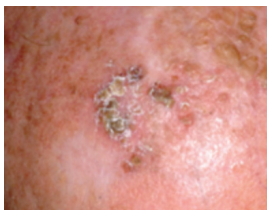
# Skin Cancer Information Sheet

Skin cancer is one of the most common types of cancer. Early detection and appropriate management are crucial for successful treatment.

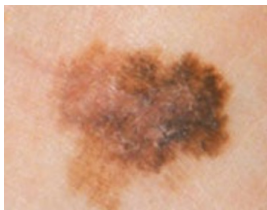
## Types of Skin Cancer



**Basal Cell Carcinoma (BCC):** The most common type, it often appears as a pearly or waxy bump. BCCs usually grow slowly and rarely spread but can cause significant damage if left untreated.



**Squamous Cell Carcinoma (SCC):** Less common than BCCs, it may present as a firm, red nodule or scaly patch. SCCs can grow rapidly and potentially spread if not treated promptly.



**Melanoma:** The deadliest form of skin cancer, melanoma can develop anywhere on the body. It often starts as a mole that changes in size, shape, color, or texture.

## Management

Treatment options vary depending on the type, size and location of the skin cancer. A biopsy can be taken to determine the type of skin cancer and help guide management.

Non-surgical treatment is appropriate for some types of skin cancer and can include topical therapies.

Surgical excision with reconstruction (flap or graft) is the main stay treatment for the majority of skin cancers.

## When to Refer

- Large or complex lesions
- Cosmetically sensitive areas
- Diagnostic uncertainty
- For management in a Multi-disciplinary Team (MDT) environment
- At patient request

## Importance of Early Detection

Early detection and treatment significantly improve outcomes for all types of skin cancer.

Regular self-exams and professional skin checks are essential, followed by appropriate management.



**Dr Nicholas Haydon**  
Plastic Surgery – Hands

Sydney Hand Surgery Associates  
Suite 1, Level 4  
North Shore Private Hospital  
Westbourne Street, St Leonards  
NSW, 2065

St Vincent's Clinic  
Suite 710, Level 7  
438 Victoria Street  
Darlinghurst  
NSW, 2010

P: 02 8551 9091  
F: 02 8551 9092

E: [admin@drnicholashaydon.com.au](mailto:admin@drnicholashaydon.com.au)  
[www.drnicholashaydon.com.au](http://www.drnicholashaydon.com.au)

3 Westbourne Street  
St Leonards NSW 2065

People caring for people.